



A Rigorous Approach to Relate Enterprise and Computational Viewpoints

Remco Dijkman
Dick Quartel
Luís Ferreira Pires
Marten van Sinderen



University of Twente
The Netherlands

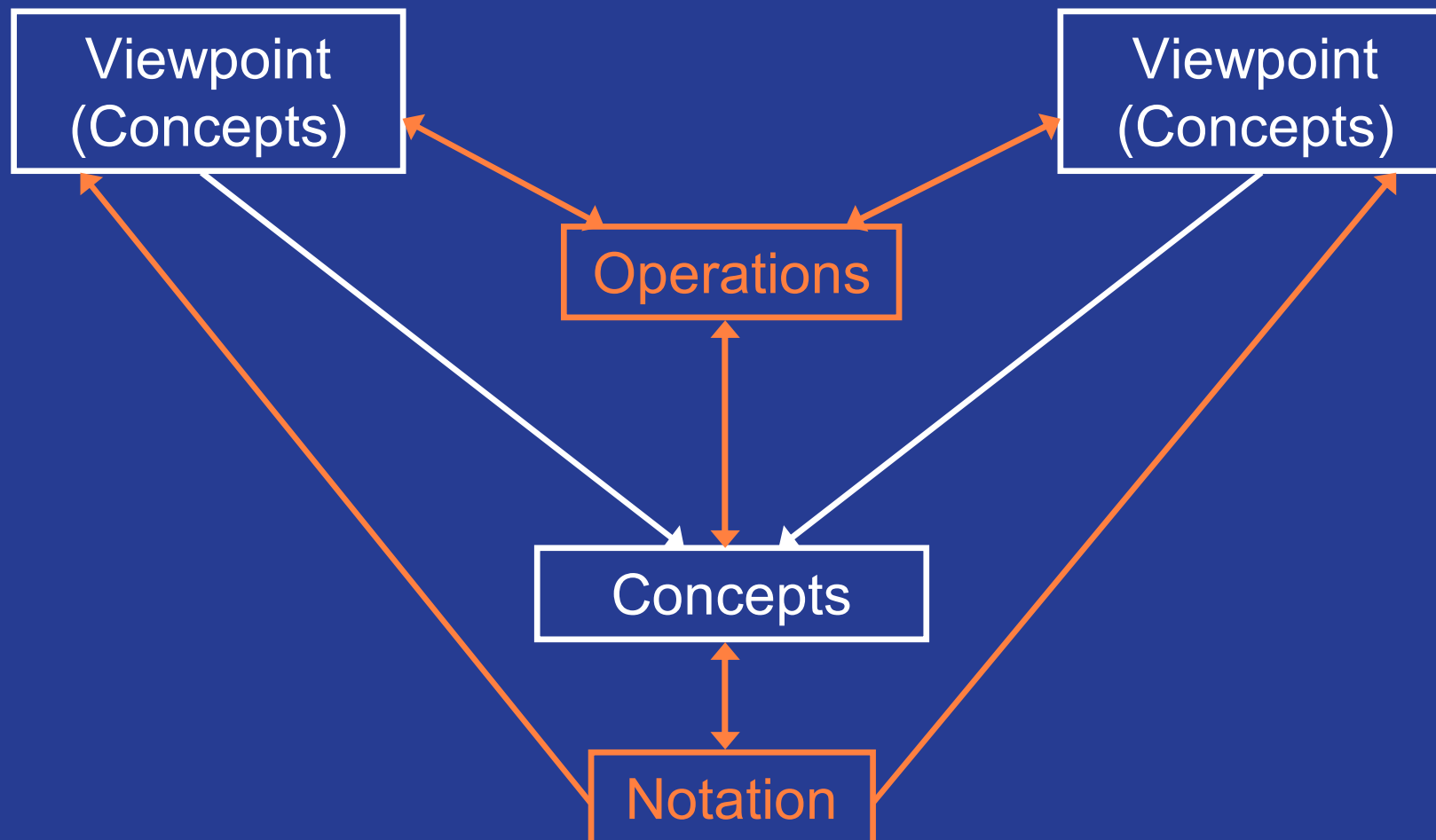


Relating Viewpoints



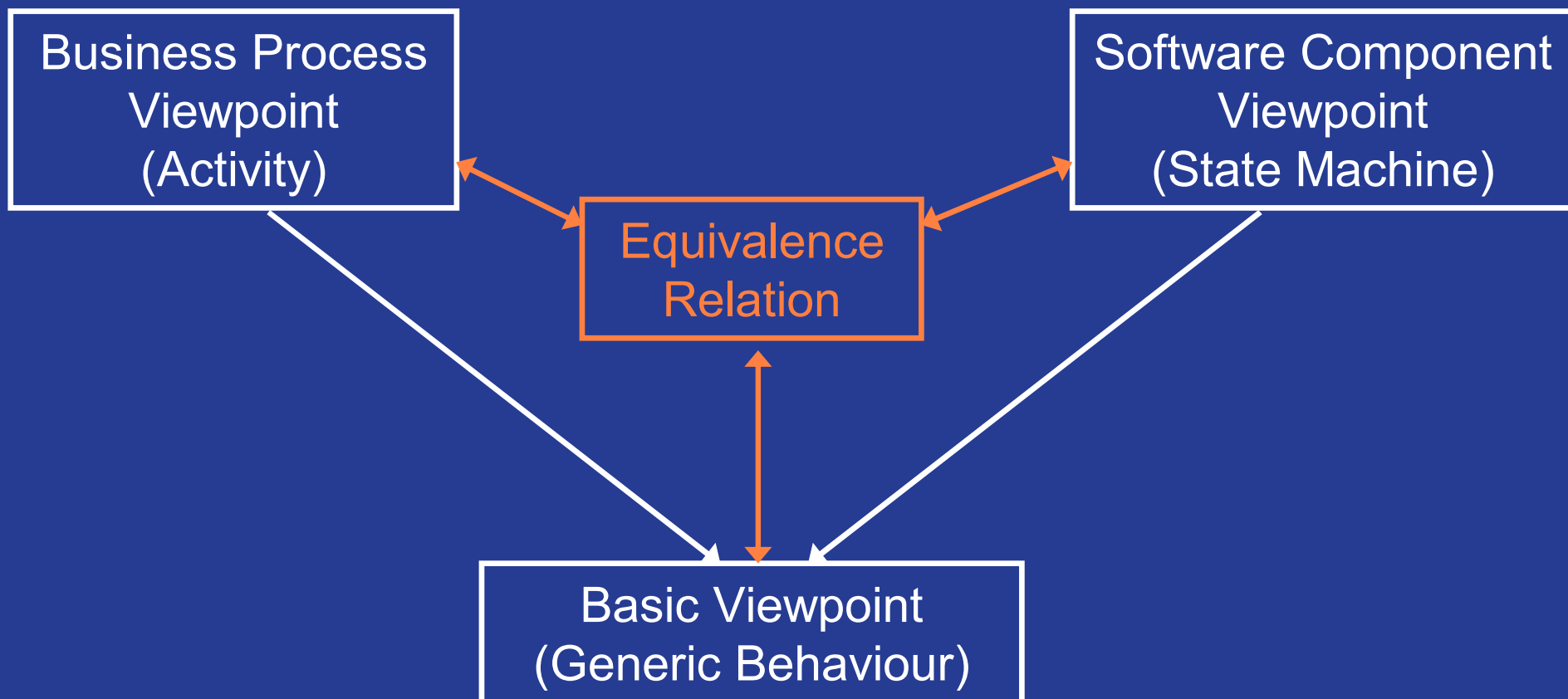


Relating Viewpoints



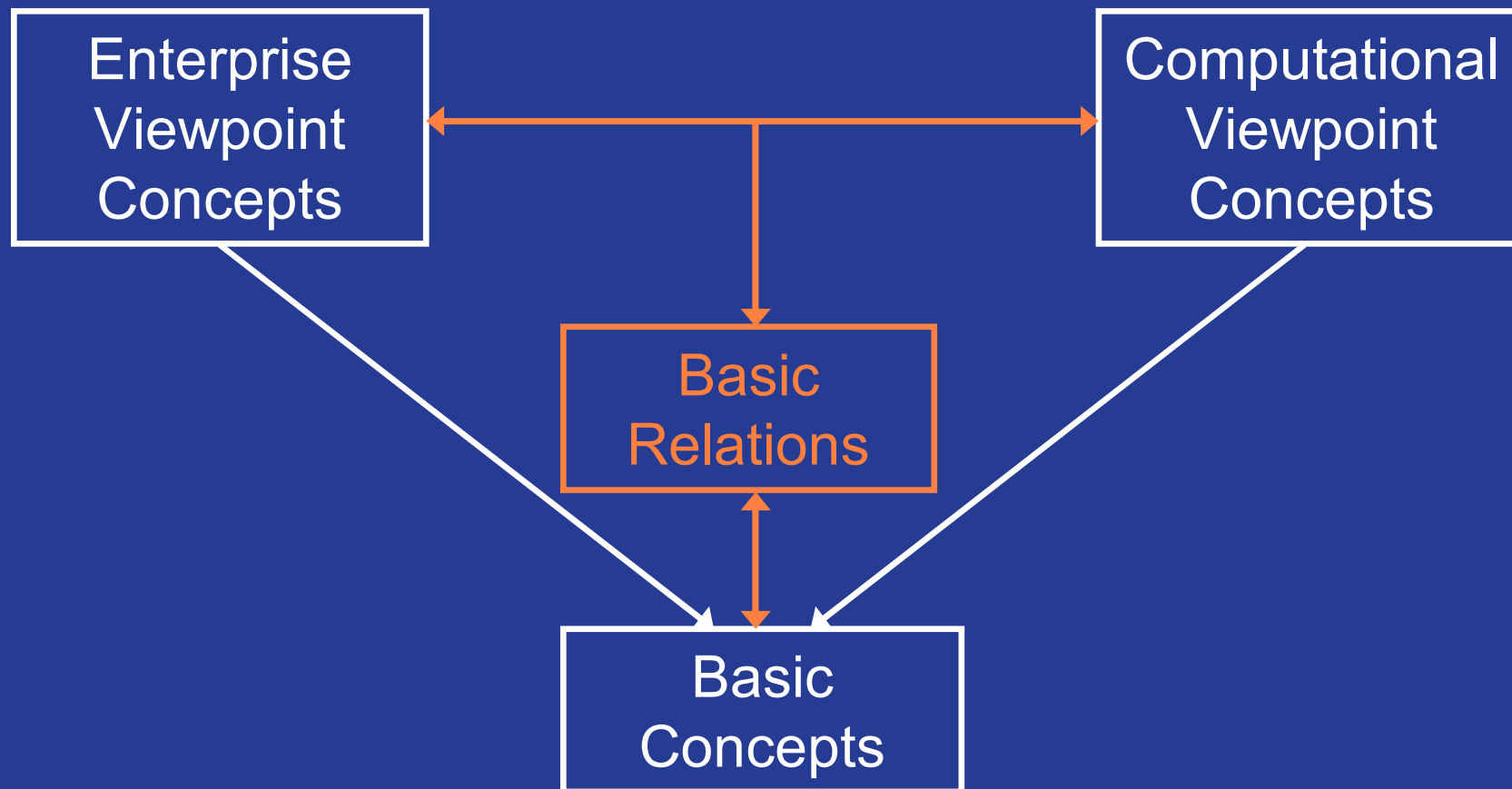


Relating Viewpoints



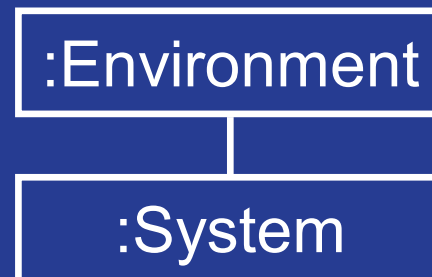


Relating Enterprise and Computational Viewpoints



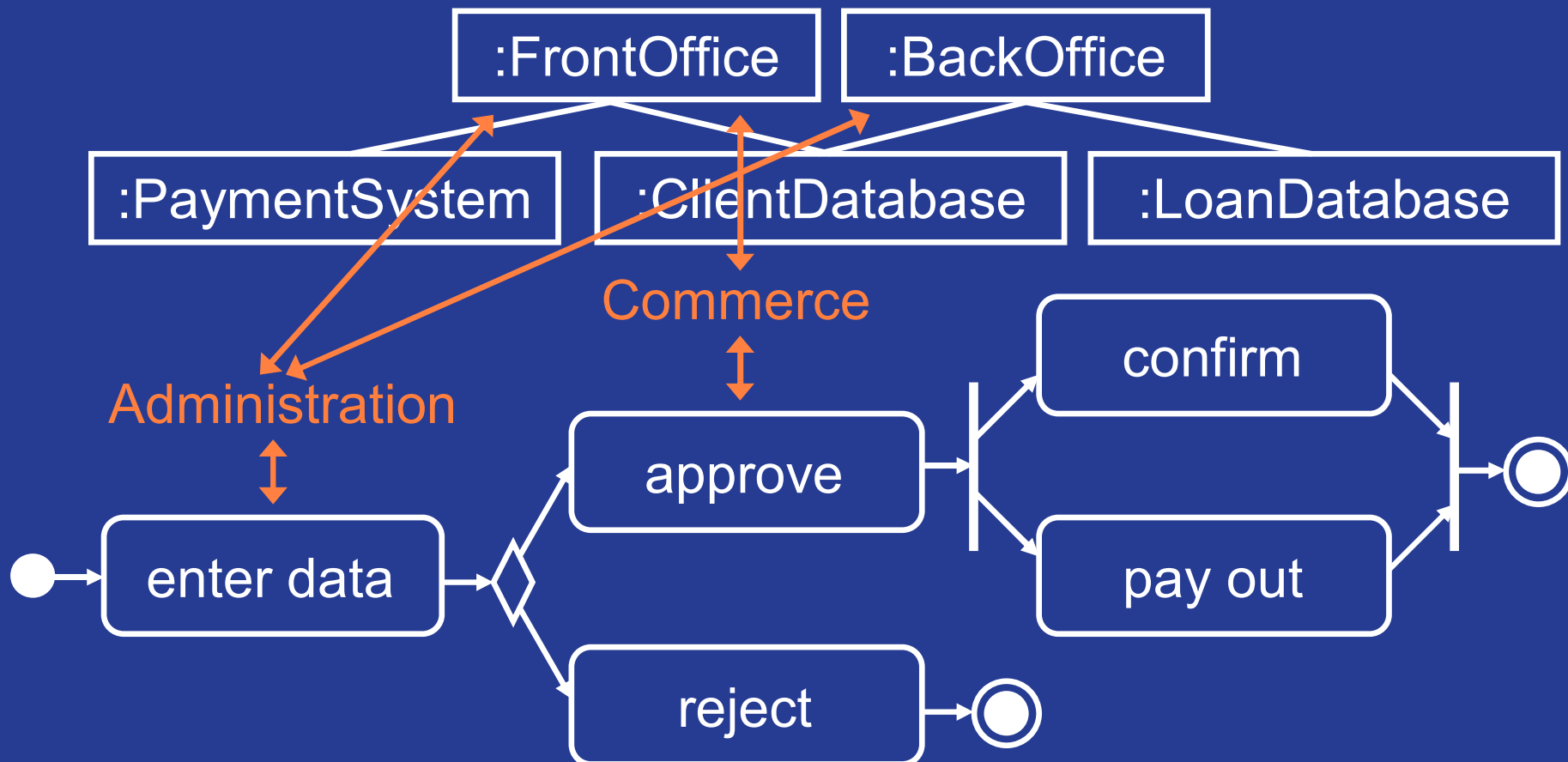


Enterprise Viewpoint

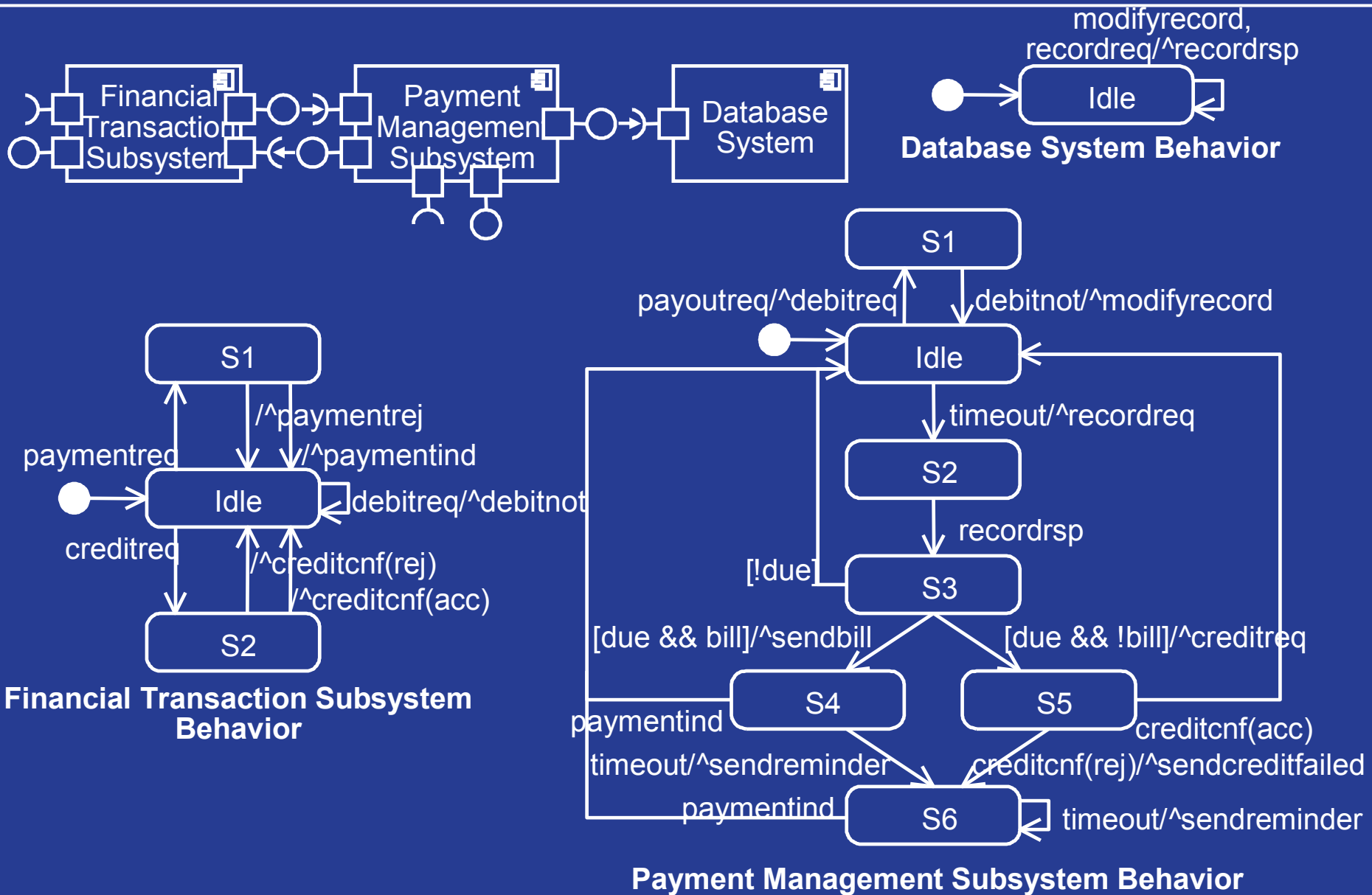




Enterprise Viewpoint

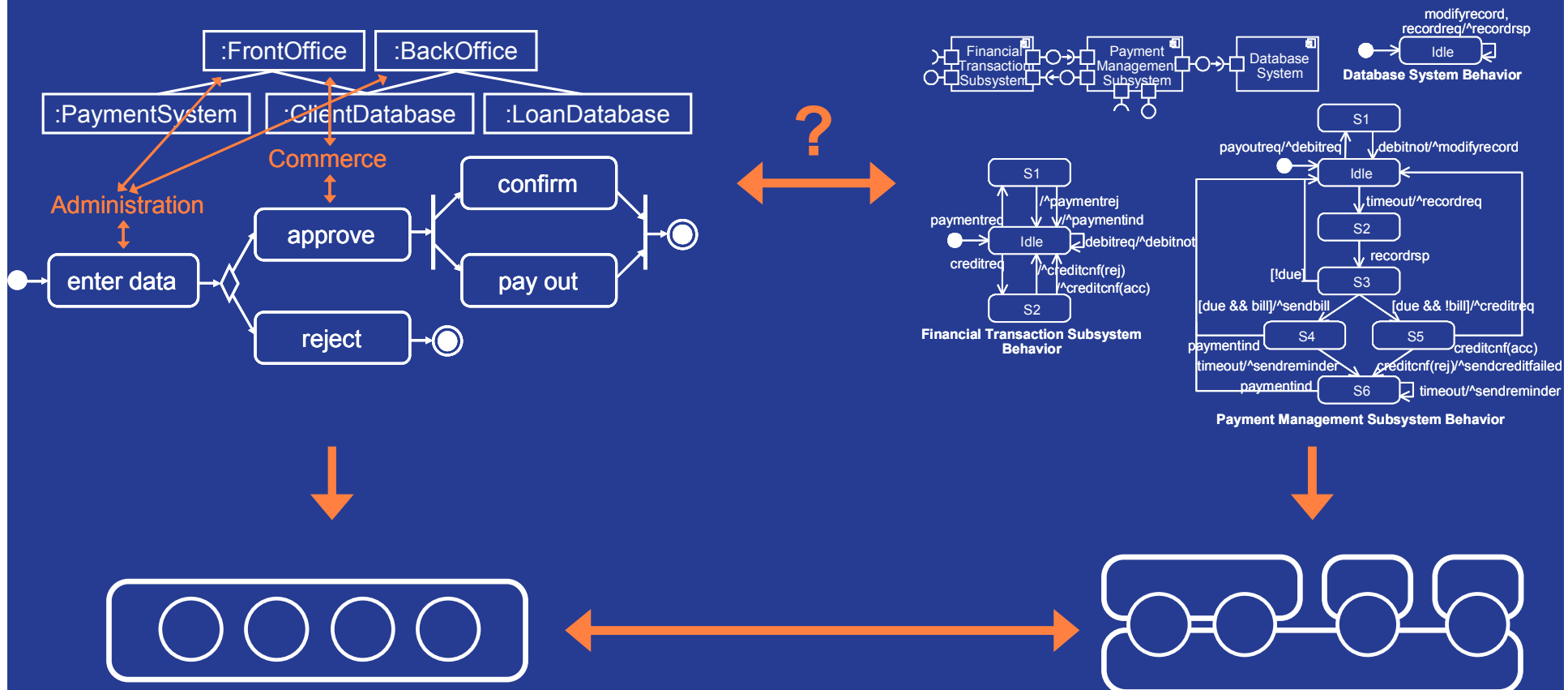


Computational Viewpoint



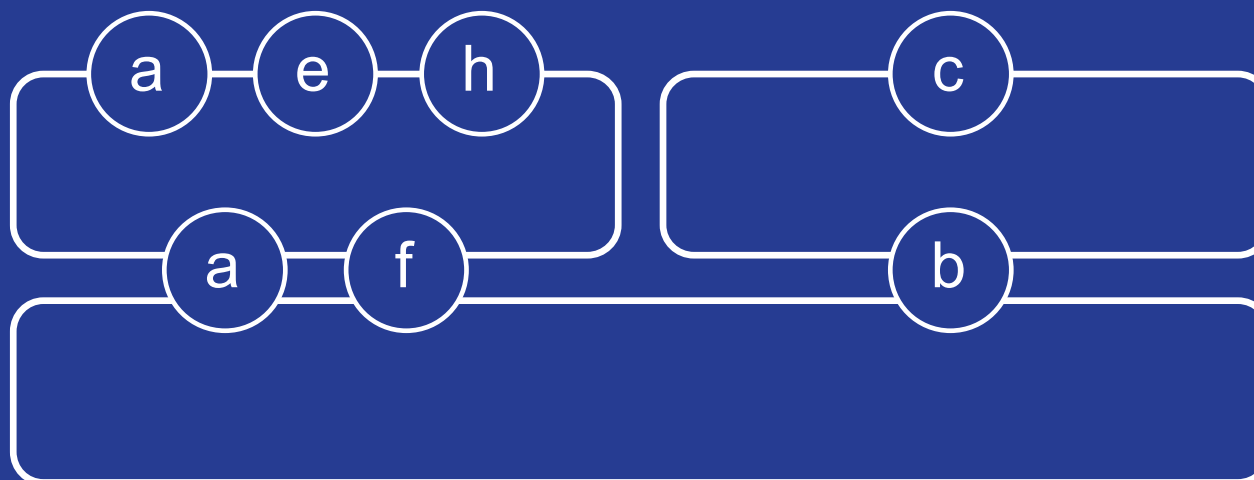
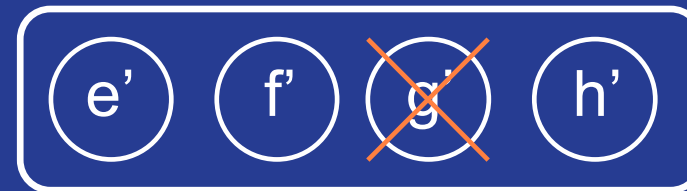
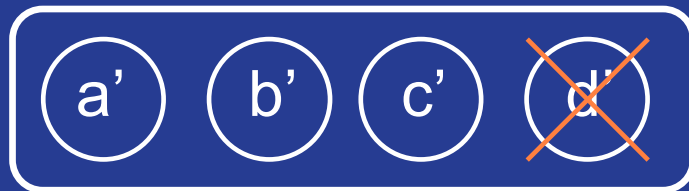


Relating Enterprise and Computational Viewpoints



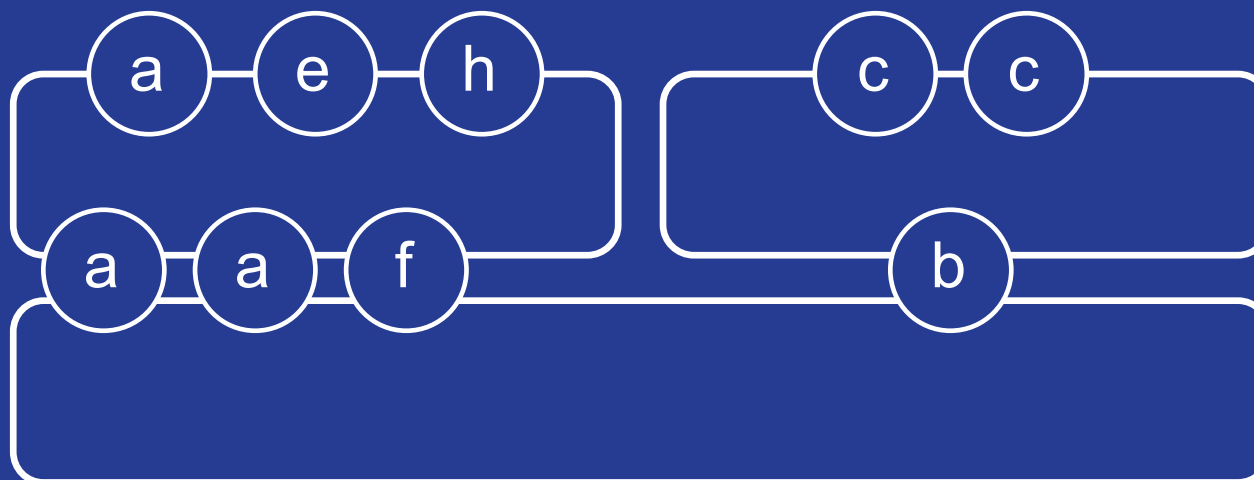
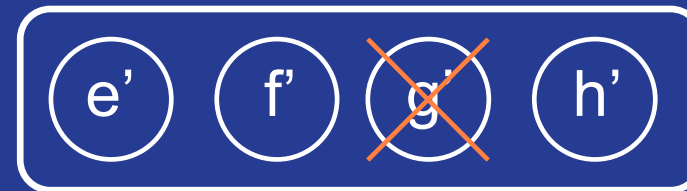
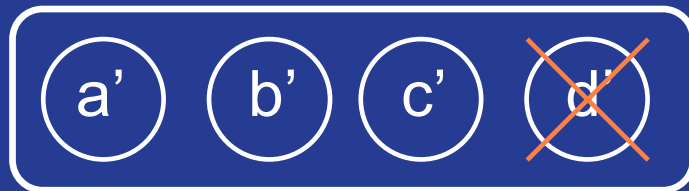


Relating Enterprise and Computational Viewpoints



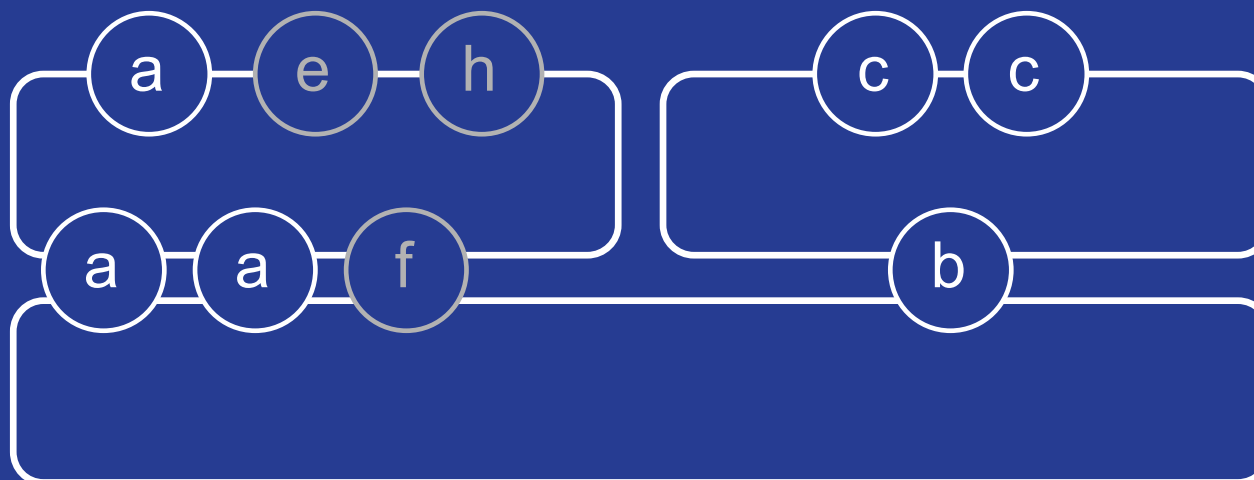
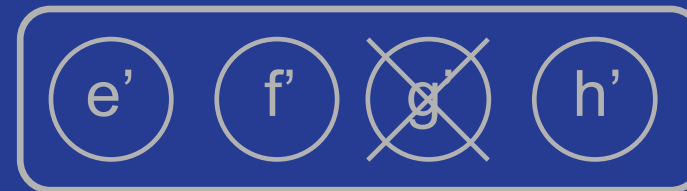
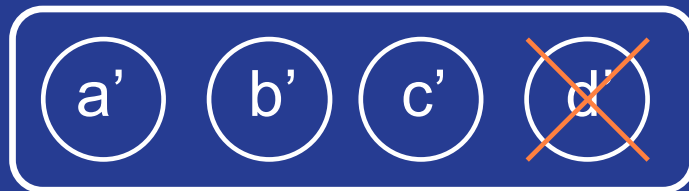


Relating Enterprise and Computational Viewpoints



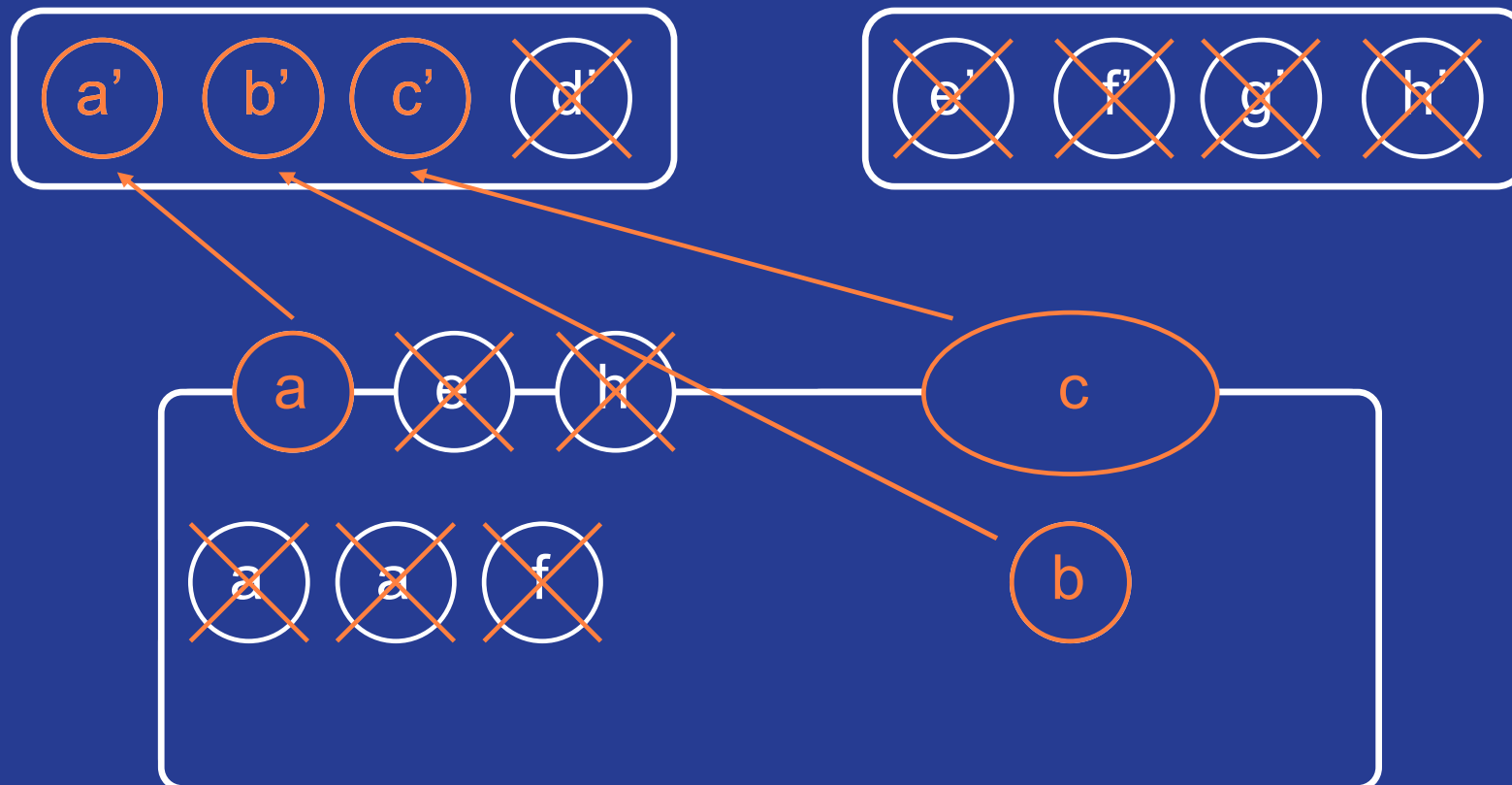


Relating Enterprise and Computational Viewpoints



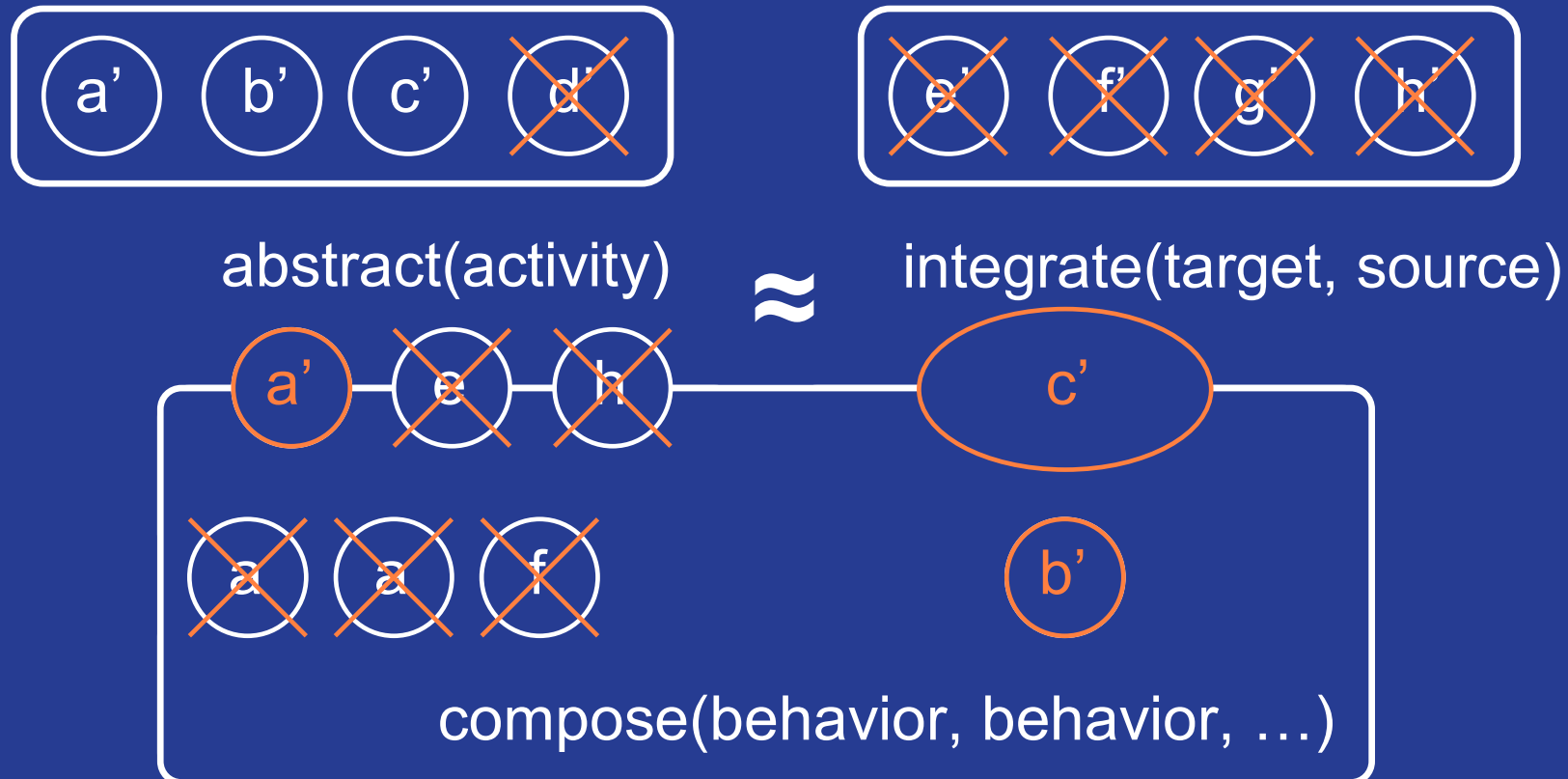


Relating Enterprise and Computational Viewpoints

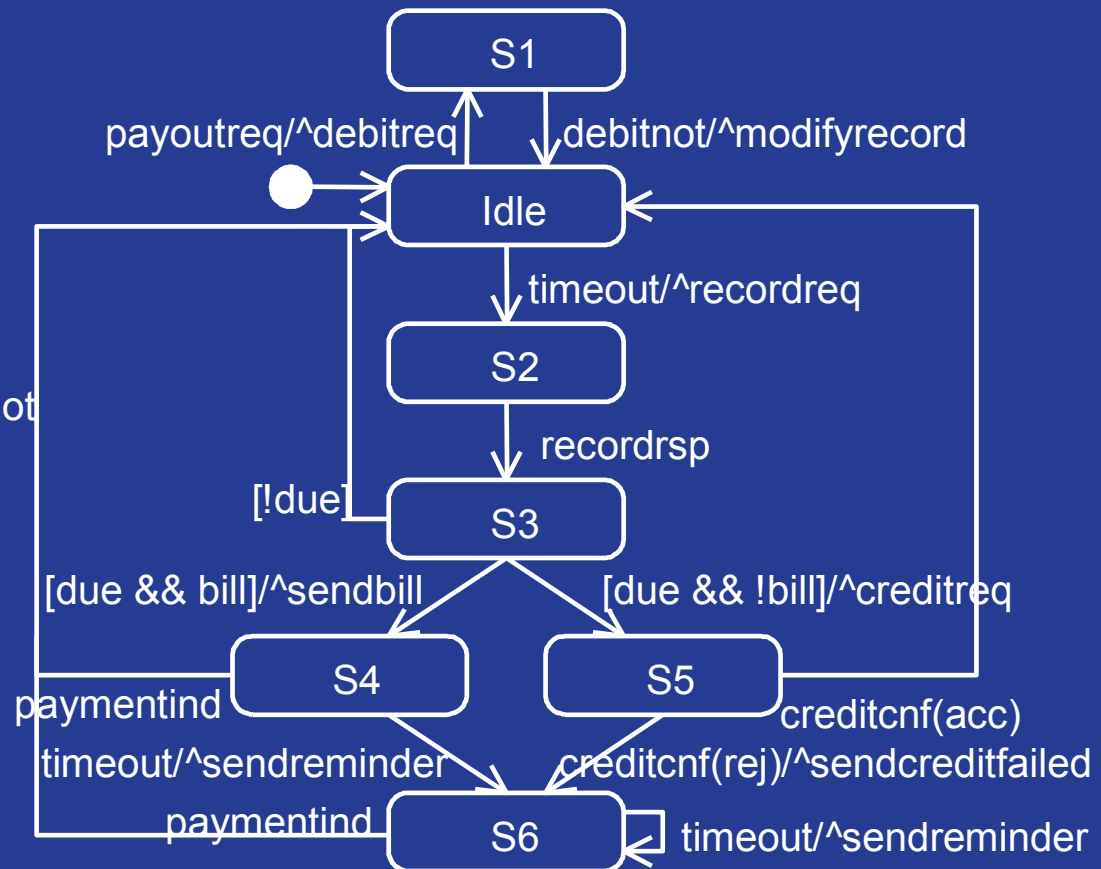
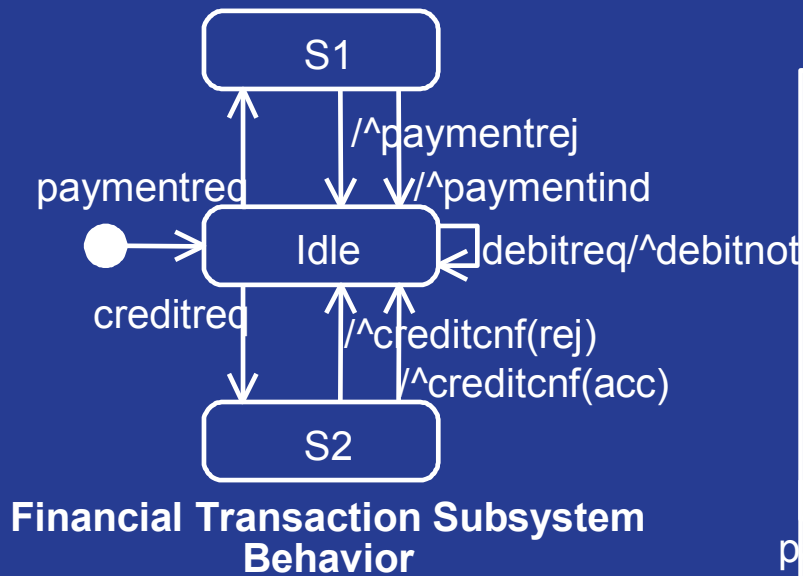
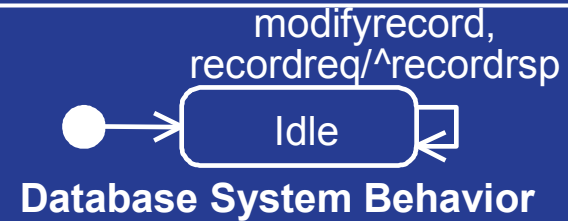




Relating Enterprise and Computational Viewpoints

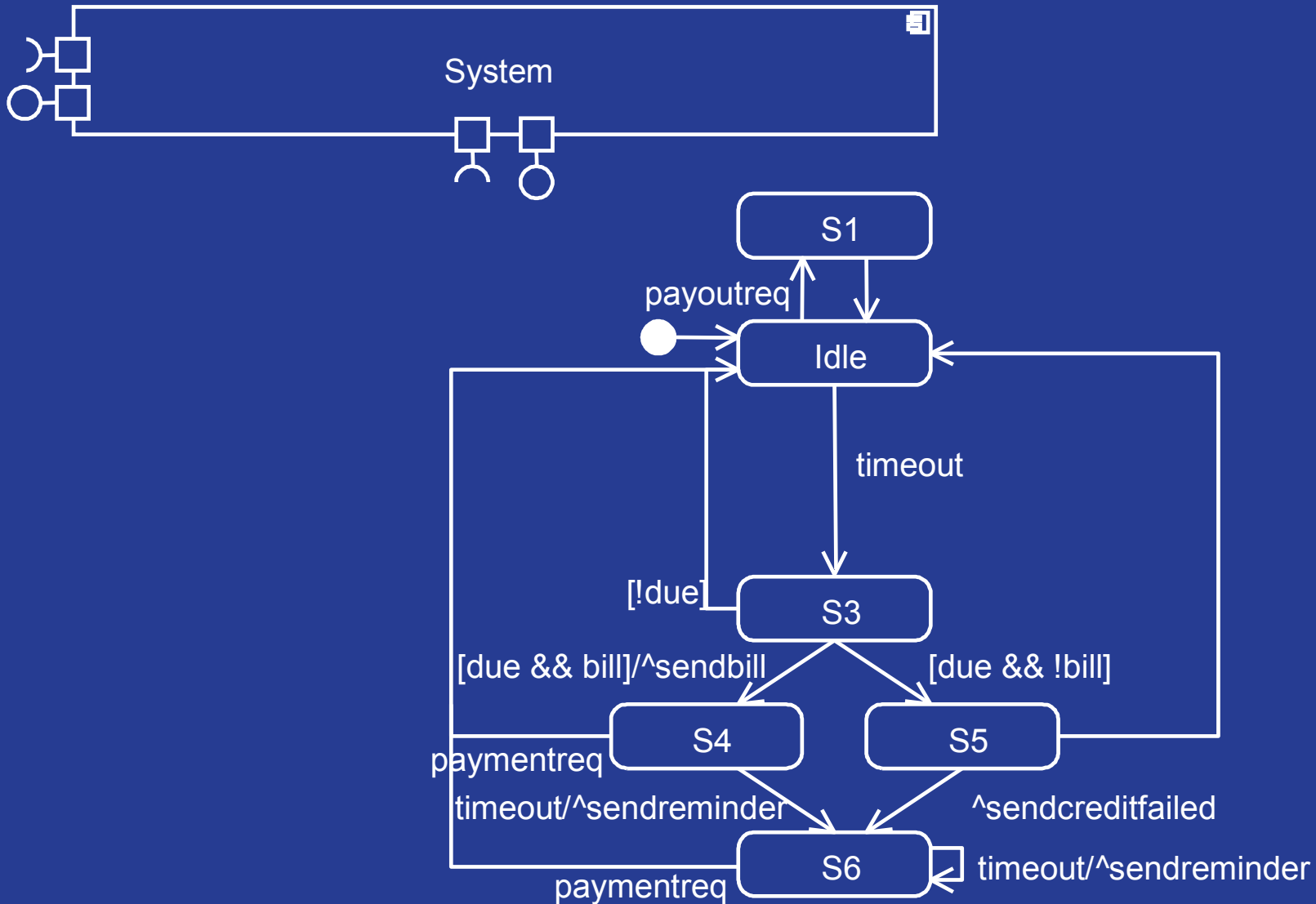


Example

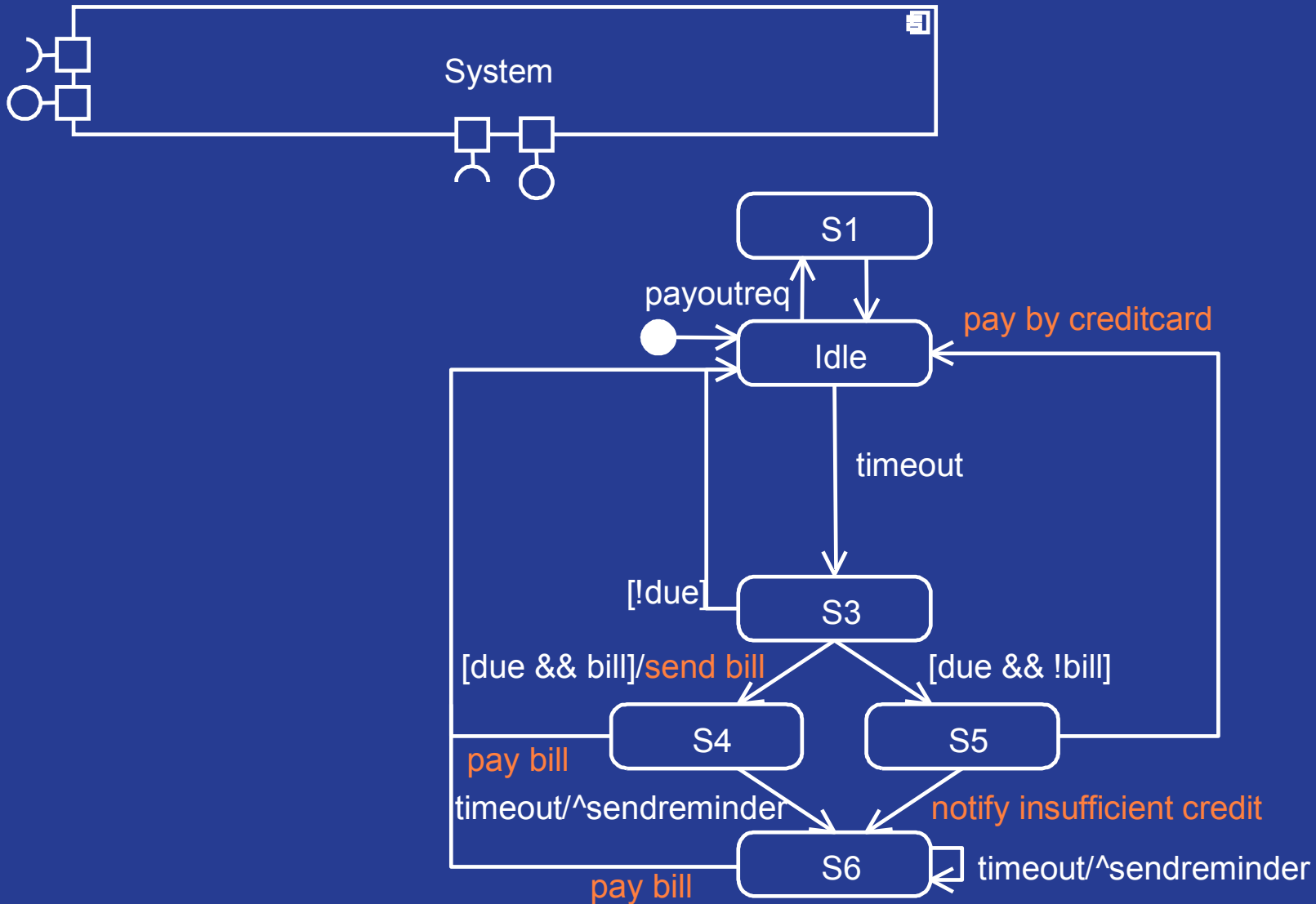


Payment Management Subsystem Behavior

Example



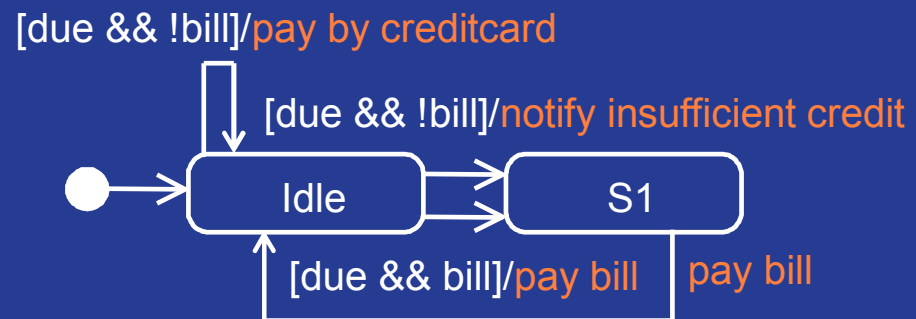
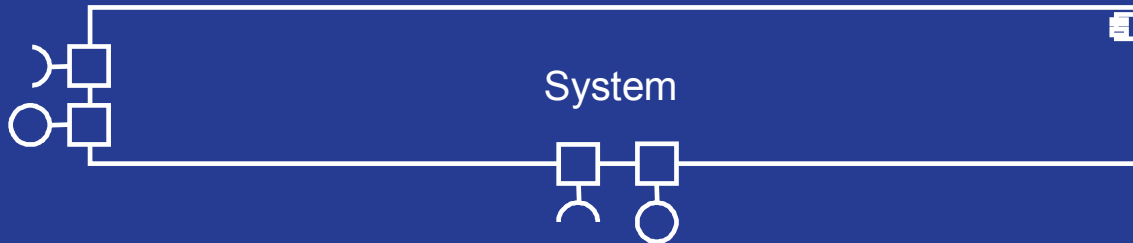
Example



Example

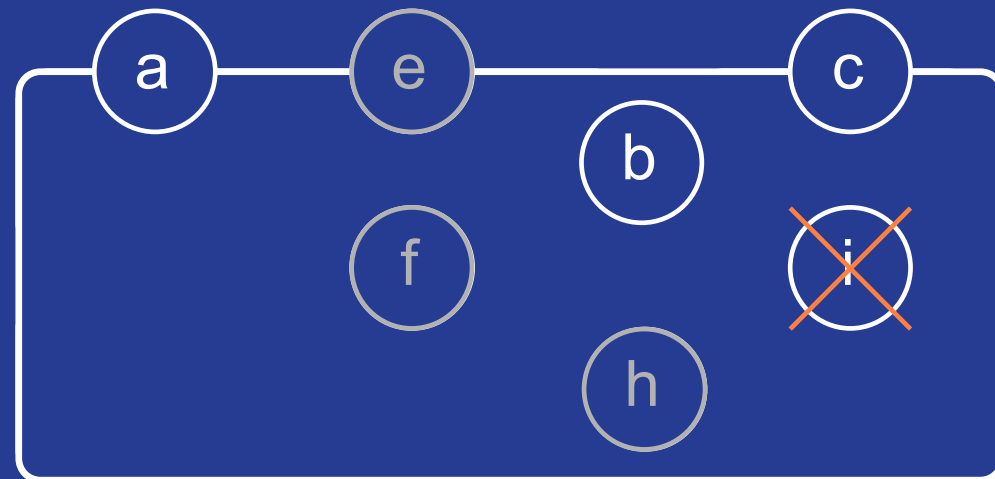
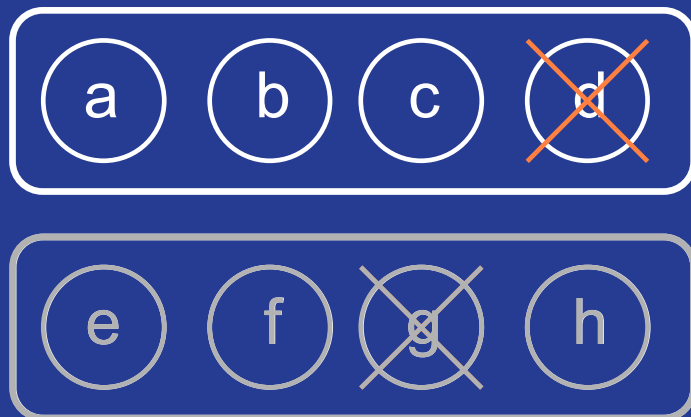


University of Twente
The Netherlands





Relating Processes and Roles





Conclusions

- Relate viewpoints via basic viewpoint
- Benefit: re-use
- Drawback: requires relation to basic concepts



Questions

