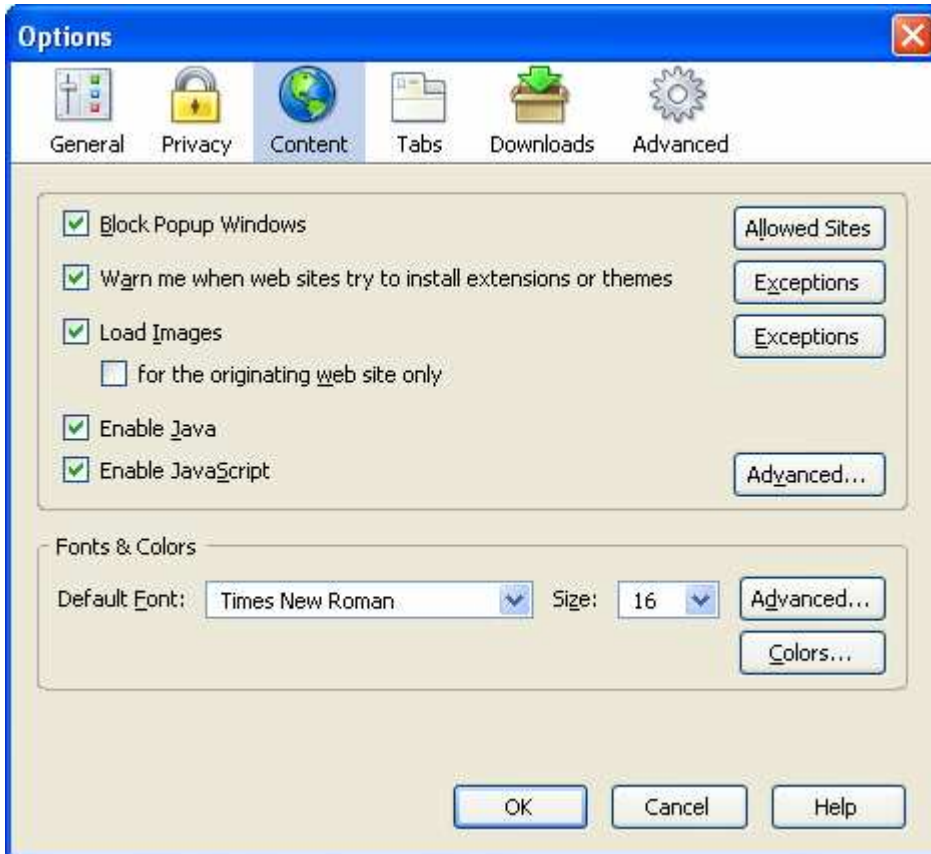


Part 3: “Breaking” the program and other experiments

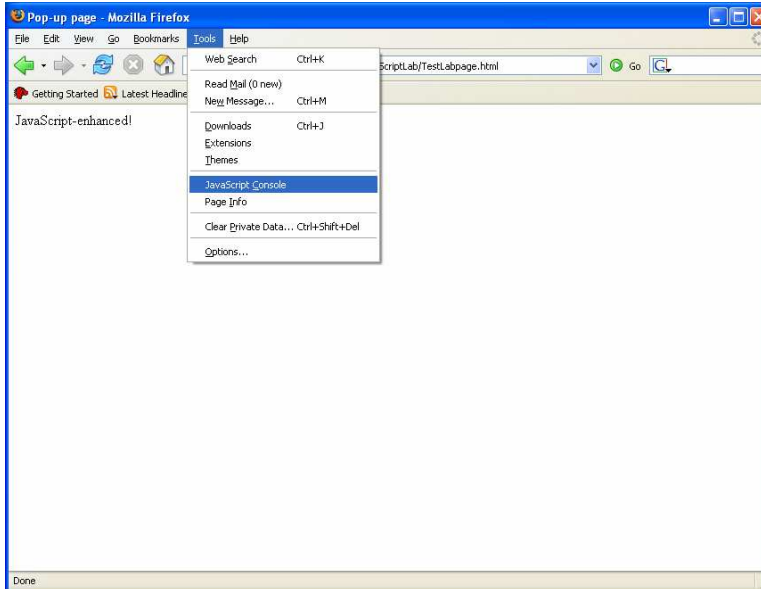
Question 11 (For FireFox), select **Tools\Options\Content**

Make sure **Enable Java** and **Enable JavaScript** boxes are checked



When a JavaScript program causes an error, the error is displayed in the JavaScript Console. From the toolbar select **Tools\JavaScript Console** as shown in the figure below.

Lab 4.1: Getting Started with JavaScript – Addendum for FireFox Settings



All of the errors encountered in your script will be shown in the JavaScript Console window. By default the errors should be visible when you click on JavaScript Console, if the errors are not shown, click on the ERRORS button.

Click on the hyperlink associated with the error you want to resolve.

